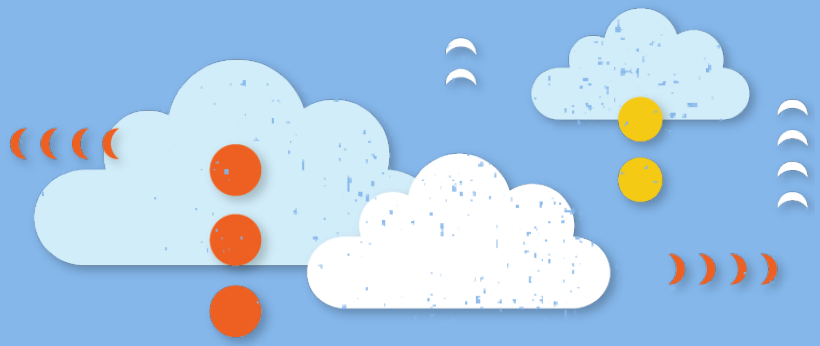


ASK 21 Checkout



Date

First name

Last name

Please take your time and review each question carefully. Sometimes several answers may apply.

Landing Pattern Speed

45 kt

50 kt

55 kt

add 1/2 wind speed when windy

The Yellow Triangle indicates

The minimum recommended final approach speed

The maximum aero tow speed

The stall speed

The Maximum Gross Weight is

1280 lbs

1460 lbs

1320 lbs

The Wing Span is

48.16 ft

63.68 ft

55.74 ft

72.15 ft

The velocity never exceed (VNE) is

- 97.2 Kt
- 108 kt
- 151.2 kt

The maneuvering speed (VM) is

- 108 kt
- 97.2 kt
- 151.2 kt

At VNE, how big can the control deflections be max.?

- 100 %
- 50%
- 1/3
- 2/3

The VNE changes with altitude, at 10,000 ft the VNE is:

- 163.2 kt
- 144 kt
- 132 kt

The Green Arc of the Airspeed Indicator ranges from:

- 97.2 - 151.2 kt
- 32.5 - 108.3 kt
- 43.0 - 97.0 kt

What is the minimum weight if flown with minimum crew?

- 143 lbs
- 161 lbs
- 154 lbs

What is the maximum weight in the front seat / back seat?

- 210 lbs
- 280 lbs
- 242 lbs

Canopy closing / opening:

The front canopy has to be closed first and the back canopy second and the pilots checks the position of the plastic piece by looking behind both of his shoulders

Each canopy can be closed independently from each other

The back canopy has to be closed first with both handles forward, then the front canopy can be closed and the pilots checks behind his shoulder if the plastic pieces are in the right position

Landing the ASK 21

Both wheels, main and tail wheel touch down simultaneously, if one wheel touches first, this will be the tail wheel

The main wheel touches first at all times to avoid load on the tail

Both wheels, main and front wheel touch down simultaneously, if one touches first, this will be the front wheel

Air brake usage

The air brakes can be used at all times during approach and landing from 0% to 100% deployment

The air brakes are not linked with the wheel brake

The air brakes are linked with the wheel brake and therefore should only be deployed 3/4 max during touchdown to prevent skidding

The air brakes are linked with the wheel brake and therefore should only be deployed 3/4 max during touchdown to avoid PIO

Max. Aero Tow speed:

65 kt

60 kt

81 kt

97 kt

Spin recovery procedure:

All controls neutral, wait for the plane to stop turning and then pick it up gentle on the stick to avoid overspeed

Opposite rudder until the spin has stopped, then release pressure on the stick (move forward), gentle pull back to avoid overspeed and overload

Rudder neutral until the spin has stopped, release pressure on the stick and gentle pull back to avoid overspeed and overload

Best L/D and best L/D speed with 2 crew:

44 , 65 kt

31 , 58 kt

34 , 55 kt

How are you supposed to shut down the electric vario?

It doesn't matter when, as long as I shut it down after each flight

First shut down the vario, wait until it is completely powered down, then turn off the main switch

The electric vario can be left on at all times. The main ON/OFF for all electrical components can be used to toggle between on and off

Do you feel comfortable getting checked out in the ASK 21 now?

Yes

No

Remarks

Please note any remarks to this checkout sheet for further improvement